



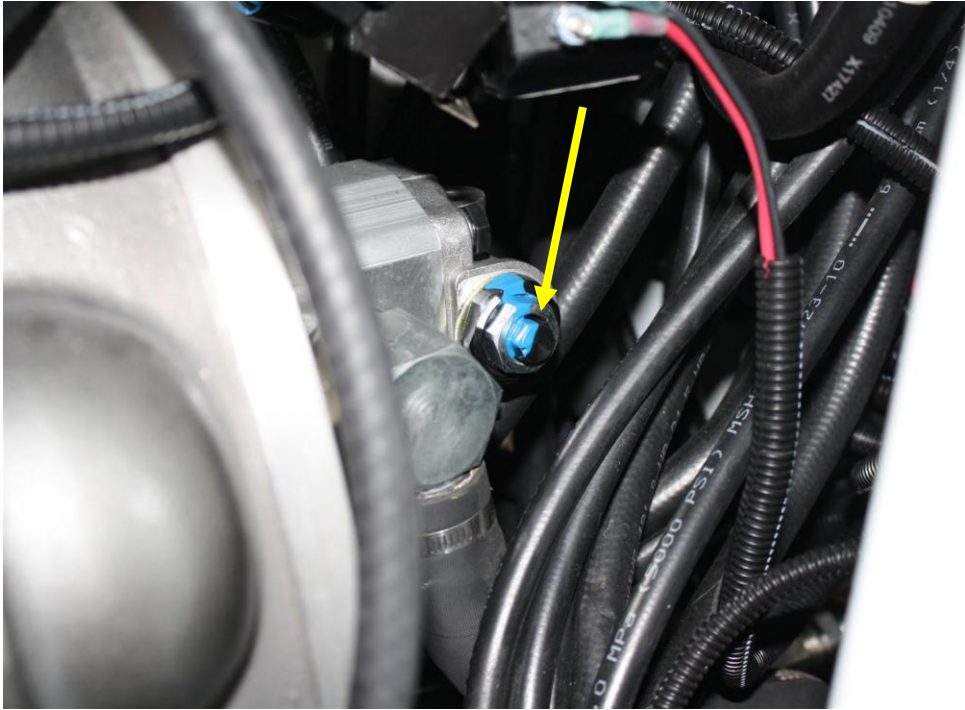
**MANUFACTURING, INC.**

Pressure  
Relief  
Adjustment  
Screws

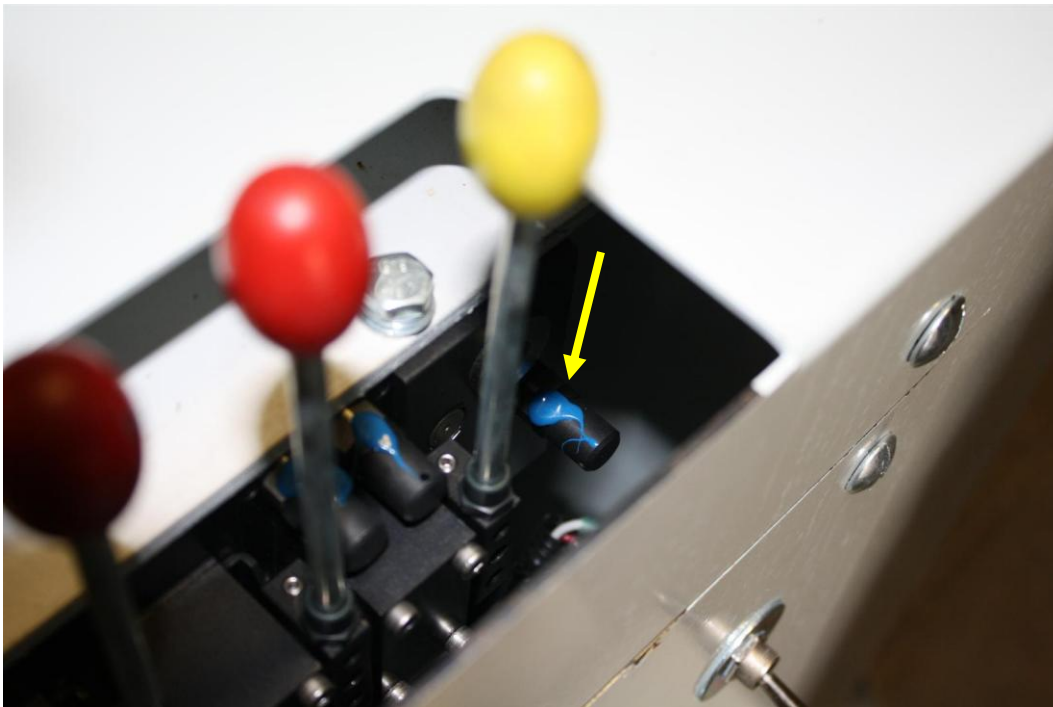
S.D.P. Manufacturing, Inc. is continually attempting to make product improvements. S.D.P. Manufacturing, Inc. reserves the right to make changes or additions to any product without incurring any obligation whatsoever to make such changes or additions to product previously sold. This manual is subject to change without notice!

S.D.P. Manufacturing, Inc.  
400 Industrial Drive  
Dunkirk, IN 47336  
Email: [sales@sdpmfg.com](mailto:sales@sdpmfg.com)  
Web Site: [www.sdpmfg.com](http://www.sdpmfg.com)

# Setting Hydraulic Pressures



If standing by the control handles the pressure relief adjustment screw for the hydraulic pump is located on the left side of the machine. The pump should be at 2900psi.



The pressure relief adjustment screw for the drive valve is located on the right side. Set the pressure for the drive valve to 2650psi.

# Setting Hydraulic Pressures



The pressure relief adjustment screw for the crane valve is located on the left side. Set the pressure for the crane valve to 2500psi.

## Setting Hydraulic Pressures

### Tools needed:

13 mm Wrench

12 mm Wrench

4 mm Hex L-Key

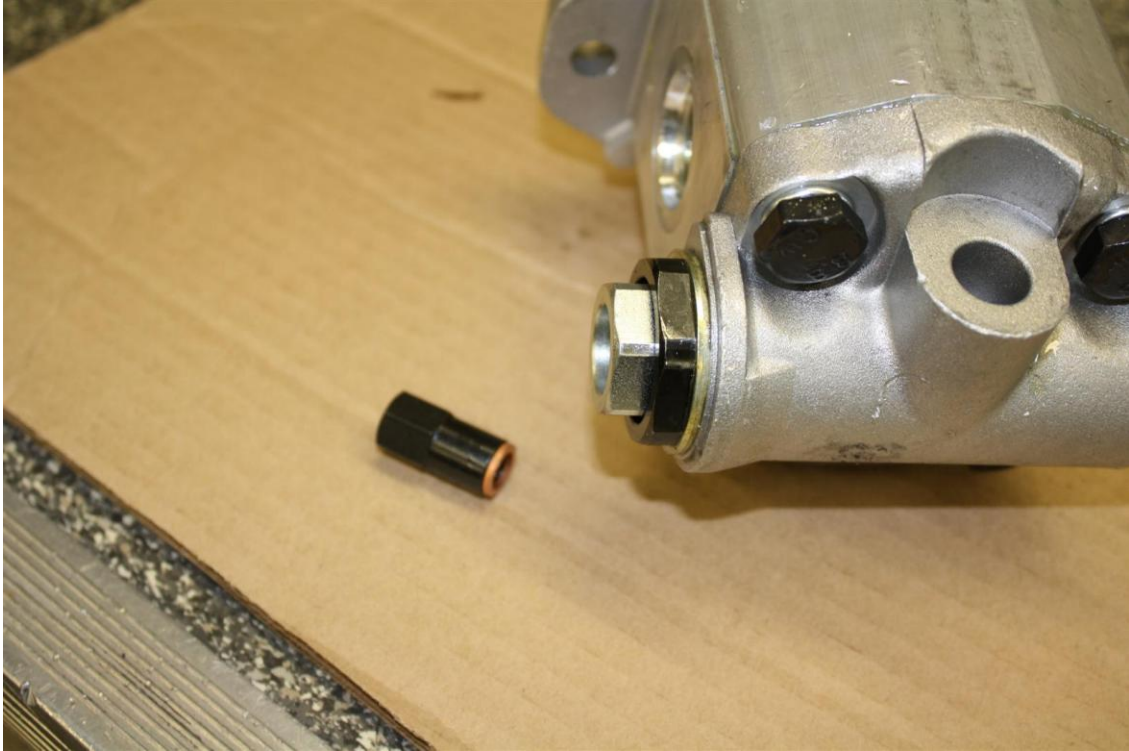
3 mm Hex L-Key

Flat Head Screwdriver

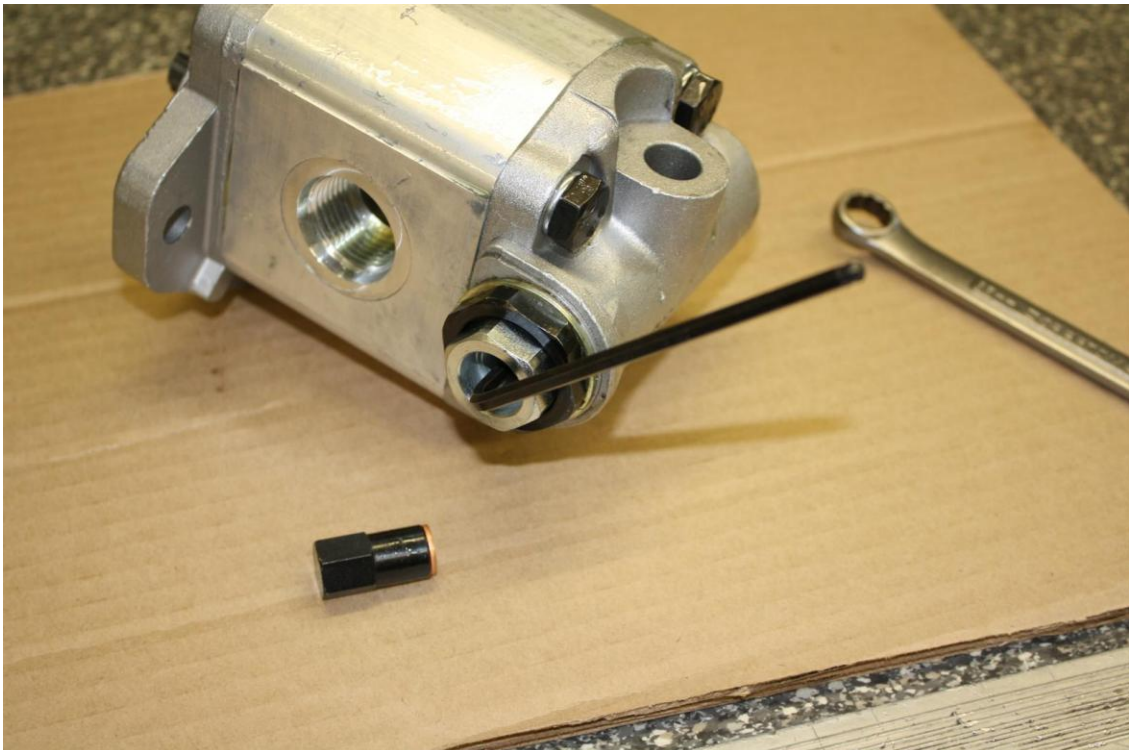
# Setting Hydraulic Pressures

## Adjusting the Hydraulic Pump

Step 1: Remove the cap from the pump, using the 13mm wrench.



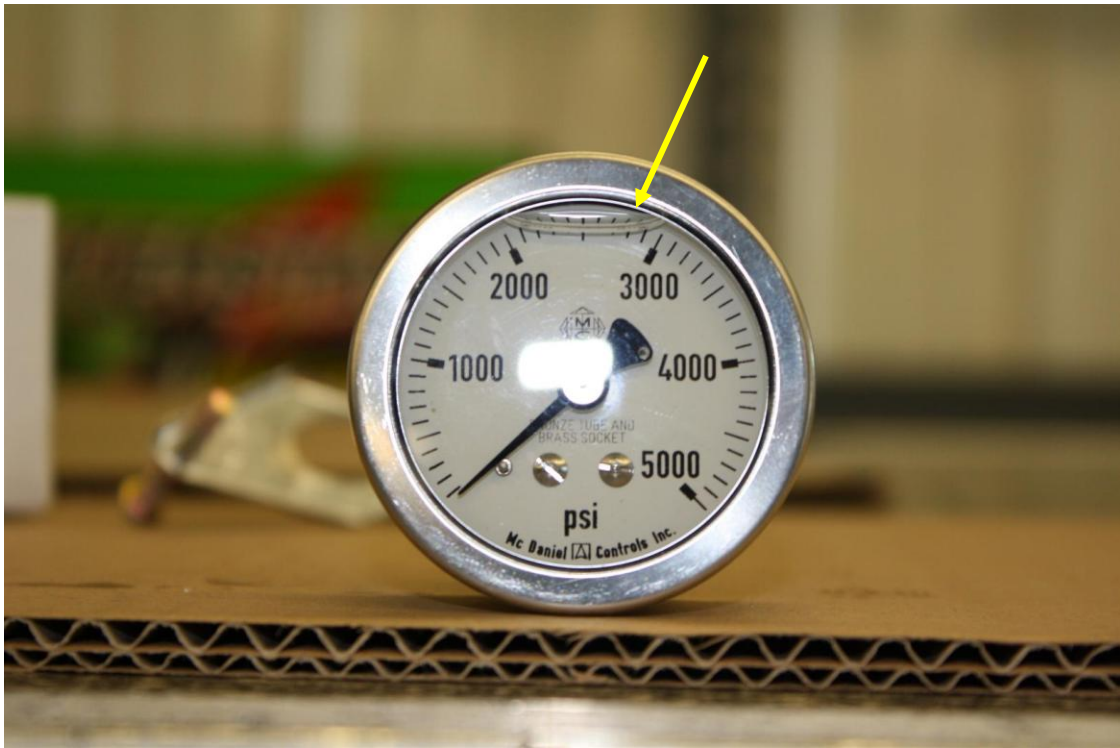
Step 2: Insert the 4mm hex l-key.





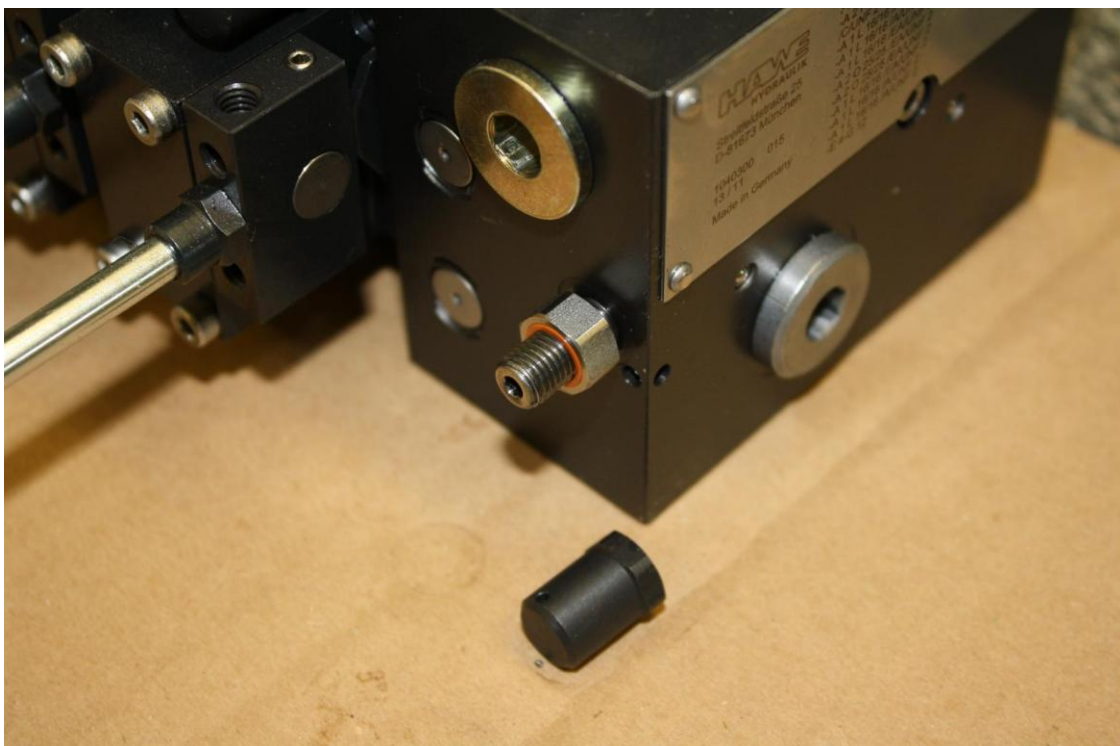
# Setting Hydraulic Pressures

Step 3: Turn 4mm hex l-key clockwise to increase pressure or counterclockwise to decrease pressure until pressure gauge reads 2900psi.



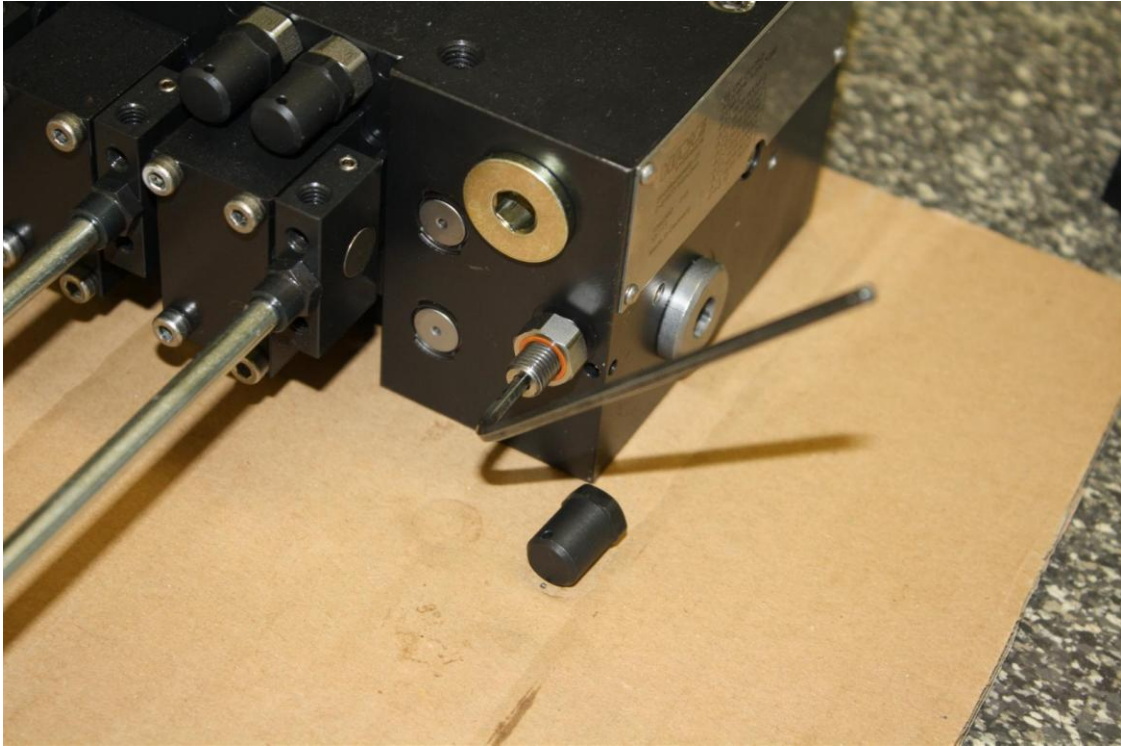
## Setting the Drive Valve Pressure

Step 1: Remove the cap and loosen the nut using the 12mm wrench.

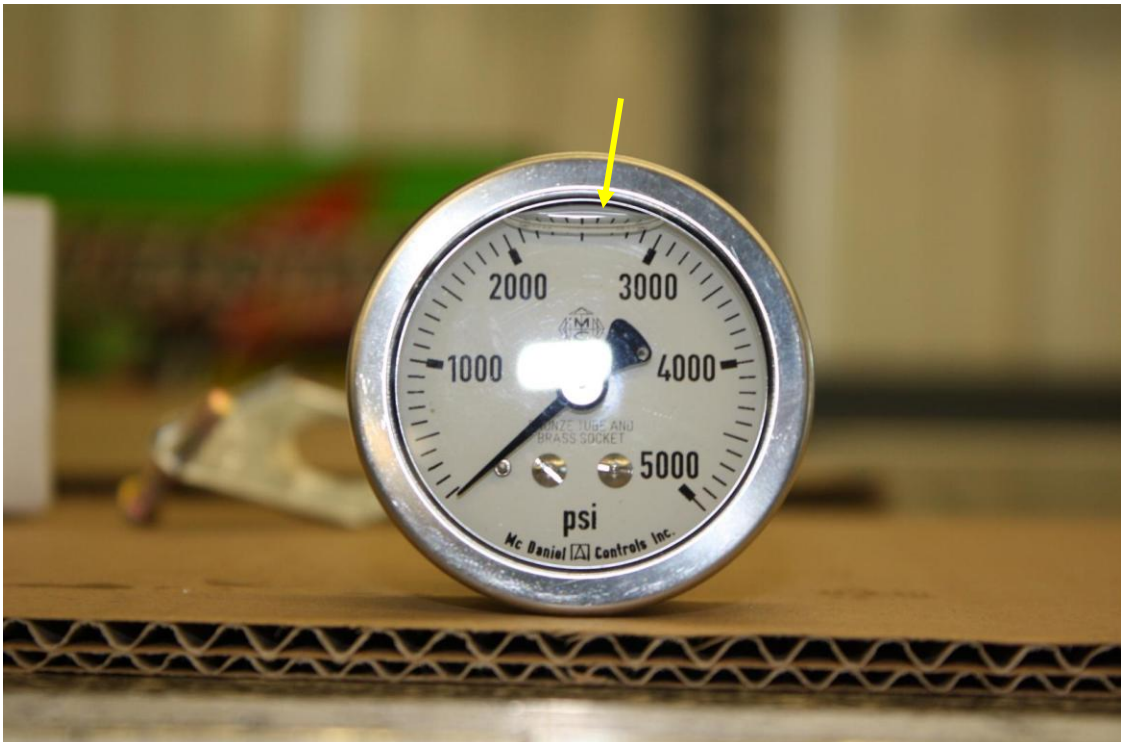


# Setting Hydraulic Pressures

Step 2: Insert the 3mm hex l-key.



Step 3: Turn the 3mm hex l-key clockwise to increase pressure or counterclockwise to decrease pressure until pressure gauge reads 2650psi.

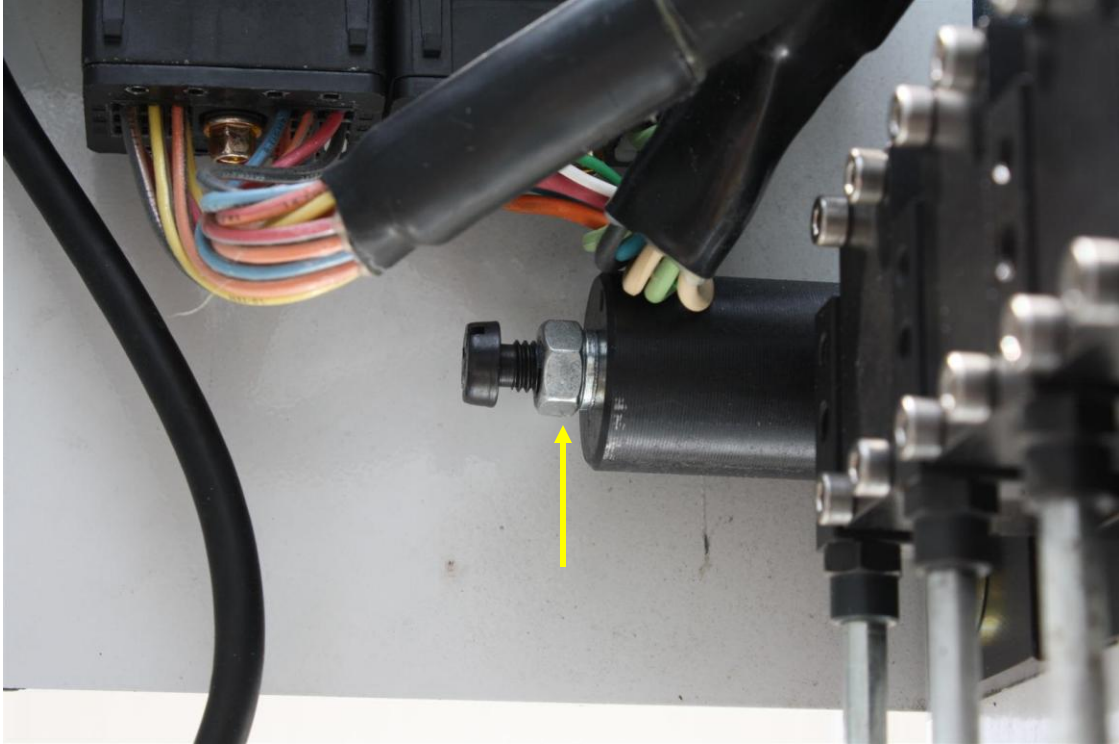




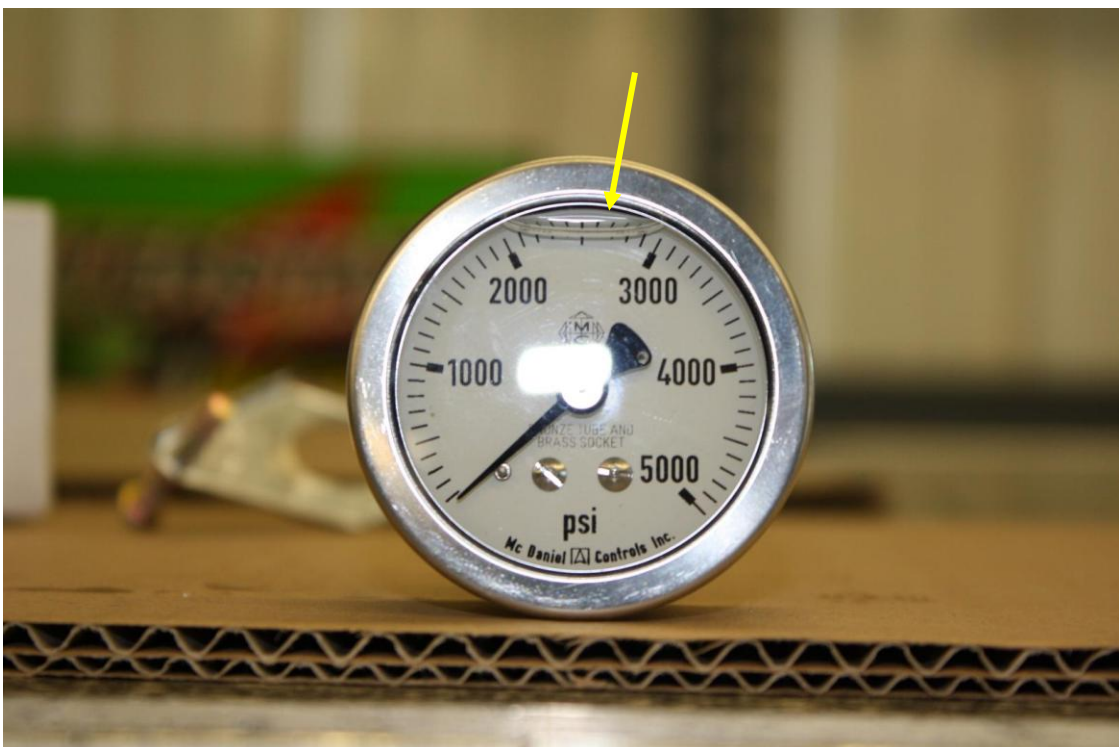
# Setting Hydraulic Pressures

## Setting the Crane Valve Pressure

Step 1: Loosen the set nut using the 13mm wrench.



Step 2: Using the flat head screwdriver turn the bolt clockwise to increase pressure or counterclockwise to decrease pressure until the gauge reads 2500psi.



# Setting Hydraulic Pressures

Final Step: Tighten everything back up.