



MANUFACTURING, INC.

## EZ Hauler 3500/3800 Product Announcement

**Subject:** Outrigger Hub & Pin Update

**Date:** June 8, 2006

**To:** EZ Hauler 3500/3800 Owners

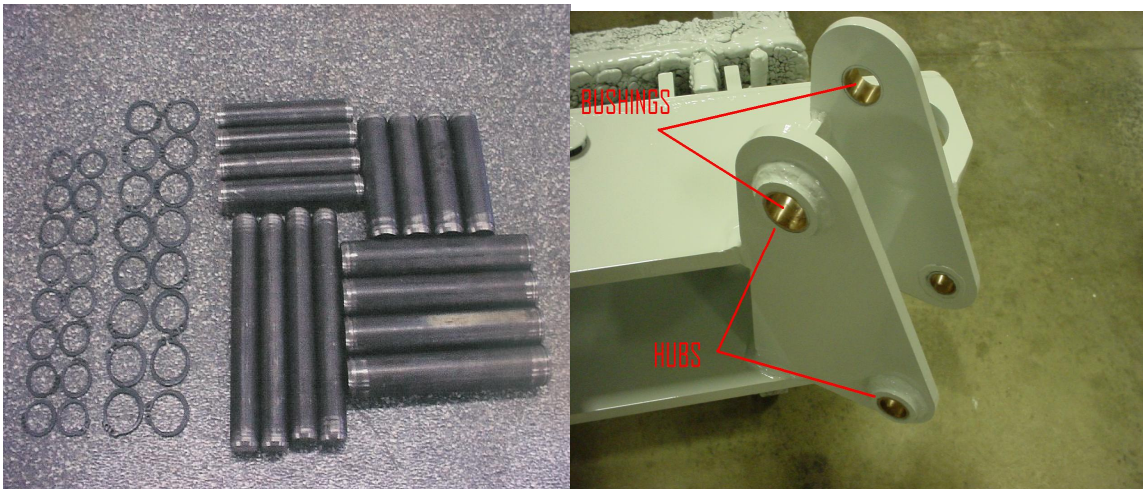
**Announcement:** CCG1741

**From:** SDP Product Support

**Phone:** 765-768-5000

**EZ Hauler models 3500/3800 manufactured prior to June 1, 2006 may experience hydraulic outrigger structural damage when overloaded. Failure to update could result in total outrigger failure!**

**This mandatory update does include that all pins are changed over from the “tear drop pin head w/bolt” style to the snap-ring retention pins. To install this update you will need the hydraulic outrigger pin & bushing kit, that is part number 011008-0331. You will also need the outrigger hub kit, that is part number 031108-0950. The hubs will need welded on, so have a qualified welder do this work.**



**SDP Manufacturing, Inc.**

400 Industrial Drive

Dunkirk, IN 47336

Tel: 765-768-5000 Fax: 765-768-5015

**Announcement #:** CCG1741

**Print Date:** 6/8/2006